



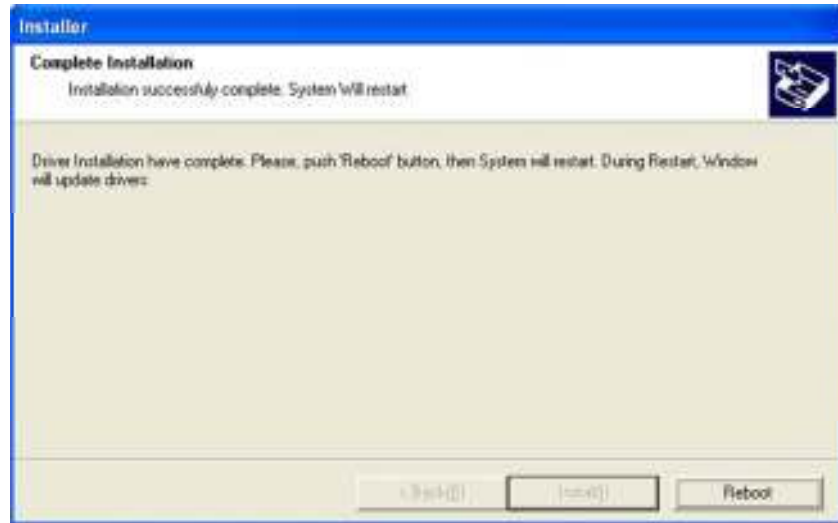
Installation Guide

Software Needed:

- Talon Drivers
Http://
- Talon Server
Http://
- Talon PDA (Optional, for mobile phone access)
Http://
- Talon Widescreen GUI (Optional, for higher resolution screens)
Http://
- Other optional software is available by logging in to the FTP and going to the Talon DVR Section.

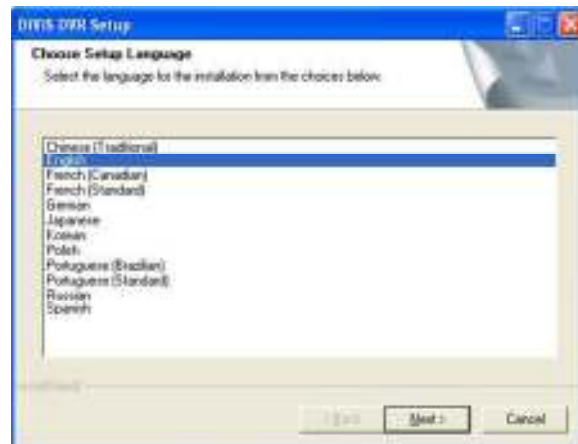
Driver Installation

- 1- Run the driver install program and follow the prompts to install the drivers.
- 2- If the card has been inserted correctly into the computer's motherboard, the install program will detect the card. Press next to install the drivers.
- 3- At the end of the installation, the program will require a reboot of the computer to activate the drivers with the card.



Software Installation

- 1- After reboot, run the installation of the Server Software.
- 2- Choose the language for the software to be installed.



- 3- Choose the proper media format (NTSC or PAL) and continue by clicking “Next.”
- 4- Choose a Username and Password. (usually, “Admin” as the user name and “backdoor” as the password).



DVR Configuration

1- Run "DVR Setting".



2- Create a Volume

a. Click "Disk tool", in order to reserve the space for DVR database.

- b. Make number of volumes desired at "Add Volume" and click "Add". This configuration needs to be done for each Hard Disk. Clicking "Create Volume" creates a Talon file system on all of hard disks. (Note: Leave at least 5 to 10 volume of max space allowed).



3- System Setup



- a. Site Name – Type in the name of the Restaurant/Company.
 b. Site Location – Type the city/state of the Restaurant.

- c. Auto Startup – Enable it so that the program auto starts if the computer reboots or is turned off.
- d. Initial screen: Number of camera shots that will be displayed when system is started. Adjust the value depending on the number of camera used.
- e. Auto Startup: Enable automatic startup of DVR Main Program upon system start.
- f. Allow Remote Connections – Enable for remote access viewing of cameras.

Camera Setup



- 1- Enable Camera - Enable or disable camera.
- 2- Resolution – The higher the resolution, the better the image, but the more space it will take.
- 3- All other settings leave as they are unless a specific change is needed.

- 4- Click on “Select all” if setting all the cameras the same way.
- 5- Click on Schedule
- 6- Choose the desired options for recording : Normal or Motion. After choosing, click on the boxes for the days and times you want the cameras to use that option (to select every day and every hour, click on the top left box, leave the button pressed, and drag to the bottom right box.
- 7- Click “Apply” or “Save & Close” if done.

Run Talon Program

- 1- Click on “DVR Main” Icon, located on Windows Desktop.

